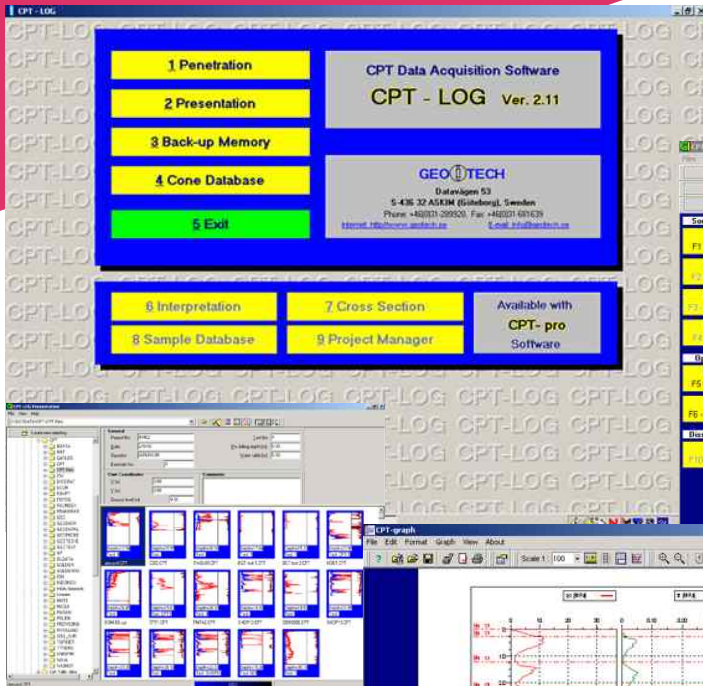
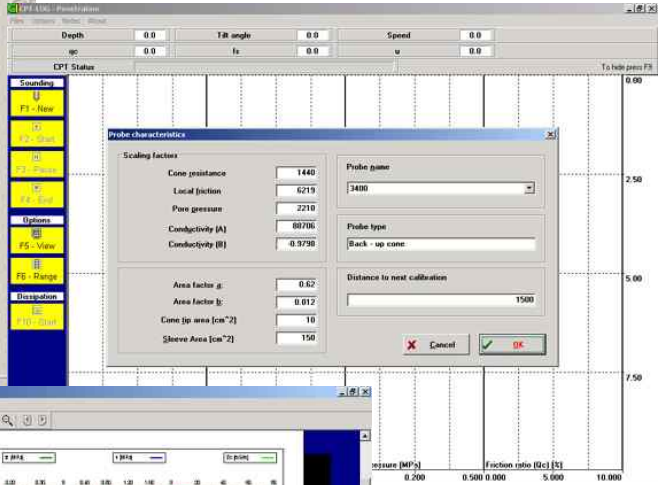


CPT Logging Software

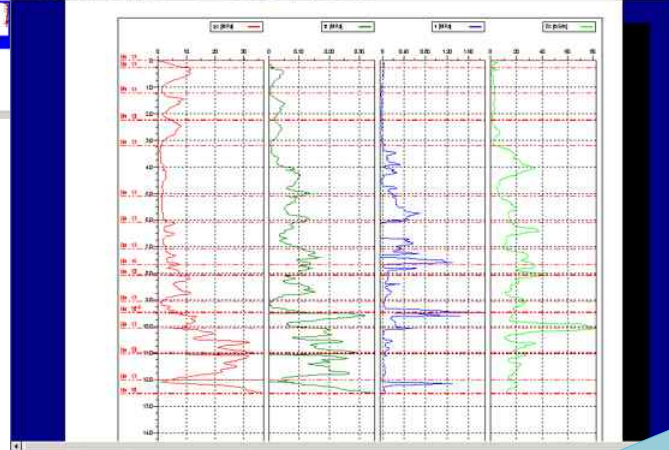
DATA ACQUISITION & SOFTWARE



Geotech CPT acquisition software CPT-LOG (Windows 95/98/2000/NT™): Screen display of shell showing modules for Penetration, Presentation, Back-up Memory and Cone Database.



CPT-LOG v2.11: Presentation module, most CPT file formats accessible via thumbnails.



CPT-LOG v2.11 "Penetration" module & check of probe characteristics



User friendly software for logging and plotting. Downloadable demo



CPT-LOG v2.11: Presentation of Geotech *.cpt file with display of flags (dashed horizontal lines, i.e. stop levels, dissipation level, etc.)

Screen display of logging software CPTGL (DOS version)

Output files are ASCII, comma separated or GEF, CPD and AGS compatible

Geotech manufactures since 1979 a unique Cordless Cone Penetration Test (CPT) system with acoustic data transmission through the CPT rods and logging software.

Providing "Back-up memory" read out module and Cone Database



**Datavägen 53, S-436 32 Askim
(Göteborg) Sweden
Tel +46 31 28 99 20, Fax +46 31 68 16 39
E-mail: sales@geotech.se
http://www.geotech.se**

Versions available: CPT-LOG v 2.11 (Windows 95 or higher)® and CPTGL (DOS)

THE LEADING EDGE SCANDINAVIAN MANUFACTURER OF GEOTECHNICAL EQUIPMENT

GEOTECH CPT LOGGING SOFTWARE, CPT-LOG, VERSION 2.11

The Geotech Cordless Cone Penetration Tests (CPT) can be logged with the Geotech field computer Geologg-PC (see separate data sheets). Alternatively it can be monitored and recorded with the Geotech CPT Interface box connected to PC-Notebook. A demo version can be downloaded at the Geotech web site.

CPT-LOG v2.11 is a fully 32 bit software designed for Windows 95/98/2000 or NT™ and is menu operated. This is software logs point resistance Q_c , sleeve friction f_s , pore pressure u , tilt angle, electric conductivity, temperature, penetration speed and dissipation test in the "*Penetration Module*". It furthermore calculates in semi-real time the friction ratio R_f . On the screen up to four graphs can be displayed. The choice of displayed channels can be changed during a sounding. Zeroes are checked on all channels before and after tests and all scales can be chosen manually. In the "*Presentation mode*", CPT files from most manufacturers are displayed as *thumbnails* (see front page) and presented according to international or Dutch standards. All acquired channels are displayed, in addition the differential pore pressure ratio DPPR and different definitions of the friction ratio can be calculated. All channels can be depth corrected.

If the "*Back-up memory module*" is used (see separate data sheet) CPT-LOG v2.0 provides a read out module so that the recorded data stored in the back-up memory of the cone can be read and used as a CPT-file for further processing. The software guarantees for the exact correlation of surface and downhole recorded files.

The new "*Cone data base*" eases the obligatory input of cone depending calibration factors and geometry. The relevant data of each cone in use can be saved in this database and loaded prior to a new sounding. The user simply chooses the cone from list of database, thus making operation more convenient and time effective. Furthermore the database provides automatic control of type of cone, total soundings and total soundings after calibration.

Under DOS, **CPTGL** is a menu driven logging program for point resistance, sleeve friction, pore pressure, tilt angle, temperature, penetration speed and dissipation test. The choice of channels can be modified during a sounding. Zeroes on all channels are checked before and after each test. Output files are in *.dat format for raw data and *.cpt format (ASCII, comma separated) for processed soundings.

TECHNICAL SPECIFICATIONS			
CPT-LOG v2.0	Logging and display of CPT	CPT Software	Logging of CPT data
System requirements:	Pentium™ PC computer, min. Windows 95™ or higher: 16 MB min., 32 MB recomm., w Windows NT 32 MB min., 64 MB recomm.	System requirement:	286 PC computer, DOS, VGA screen, harddisk
Parameters logged:	Point resistance, sleeve friction, pore pressure, electric conductivity, tilt angle, penetration speed, temperature, dissipation test	Parameters logged:	Point resistance, sleeve friction, pore pressure, tilt angle, penetration speed, temperature, dissipation test, electric conductivity, fuel fluorescence (from partner www.ara.com)
Zero checkings:	Before and after each test	Zero checkings:	Before and after each test
Output format:	ASCII, comma separated data file in accordance with the standards of the Swedish Geotechnical Society	Output format:	ASCII, comma separated data file in accordance with the standards of the Swedish Geotechnical Society

ORDER REFERENCE			
Part No.	Description	Part No.	Description
08871	Logging and display software CPT-LOG, English, French and German version	08527	Logging software CPTE (DOS)
		08557	Software for plotting results (Georit) (DOS)



Geotech reserves the right to make any changes in the specifications of its products without prior notice

/Cpt-log v 2.11 ver 1.doc

INGENJÖRSFIRMAN GEOTECH AB

Headquarters (Göteborg):
 Datavägen 53, SE-436 32 ASKIM, Sweden
 Tel: +46 (0)31 28 99 20 Fax: +46 (0)31 68 16 39

Branch Office (Stockholm):
 Sulkyvägen 15, SE-163 43 SPÅNGA, Sweden
 Tel: +46 (0)8 28 99 20 Fax: +46 (0)8 56 47 47 65

E-mail: sales@geotech.se <http://www.geotech.se/>